

33%

33 percent of Georgia Southern University's graduate biology alumni continue to complete terminal degrees.

JACK N. AVERITT
COLLEGE
of
GRADUATE
STUDIES
GEORGIA SOUTHERN UNIVERSITY

WWW.GEORGIASOUTHERN.EDU
HTTP://COGS.GEORGIASOUTHERN.EDU
HTTP://COST.GEORGIASOUTHERN.EDU

GEORGIA SOUTHERN UNIVERSITY
OFFICE OF GRADUATE ADMISSIONS
912.478.5384



Georgia Southern University is a Carnegie Doctoral-Research member institution of the University System of Georgia, founded in 1906. Featuring a beautiful residential campus of more than 17,000 students, Georgia Southern is one of the largest, most comprehensive research universities in the state of Georgia. Located in the Main Street community of Statesboro, Georgia, the University offers bachelor's, master's and doctoral degrees in more than 120 degree programs through its eight colleges.



College of Science and Technology
GEORGIA SOUTHERN UNIVERSITY GRADUATE PROGRAMS

Allen E. Paulson College of Science and Technology AT GEORGIA SOUTHERN UNIVERSITY

The Allen E. Paulson College of Science and Technology offers the following graduate degree programs for qualified and interested students:

The Master of Science in Biology prepares students for diverse careers in the biological, health or environmental sciences. The broad range of research interests of biology faculty allow students to specialize in numerous areas. Modern facilities, research opportunities abroad, and easy access to diverse Coastal Plain habitats attract students from around the world.

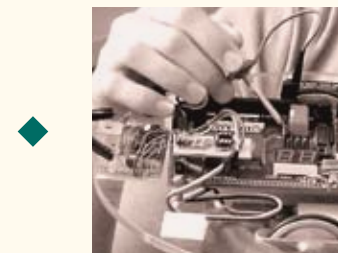
The Master of Science in Mathematics prepares students for Ph.D. studies, careers in industry, or teaching opportunities. Faculty members are committed to an advanced, high-quality mathematics education and are recognized professionals involved in local, regional and international collaboration, service and consulting.

The Master of Applied Engineering program prepares technical professionals to climb to the top in their careers. Our graduates gain the skills and confidence needed to lead their organizations, to make a difference in their communities, and to contribute to the continued technology leadership of the region.

For more information, visit <http://cost.georgiasouthern.edu> or schedule a visit by calling 912-478-5851.

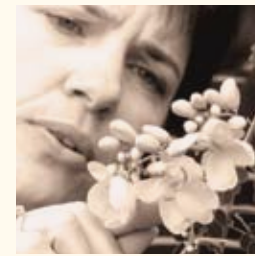
13 countries

From directors of research laboratories, engineering companies and field stations to professors, physicians and teachers, our graduate degree alumni excel and can be found working regionally and in 13 countries.



"I had an excellent experience working on my graduate degree at Georgia Southern University. The degree enabled me to blend the right amount of technical and business courses needed for my current job and future career progression."

James Suchovsky, Plant Manager, Briggs & Stratton



COMMITTED FACULTY

The culture of Georgia Southern is one of "student-centeredness." Professors are not only nationally recognized experts in their fields, but are also accessible to students in and out of the classroom setting.

RESEARCH OPPORTUNITIES

Georgia Southern students are given every opportunity to work alongside professors conducting research in the field.

GLOBAL FOCUS

Allen E. Paulson College of Science and Technology maintains a sharp focus on global technological changes through its Advisory Board of national and international leaders including Coca-Cola, Viracon, BASF, the Centers for Disease Control and Prevention and Gulfstream Aerospace.



GRADUATE DEGREE PROGRAMS

Master of Science (M.S.)

- Applied Engineering
 - Engineering Management
 - Information Technology
 - Mechatronics
- Biology
- Mathematics
 - Applied Mathematics
 - Computer Science
 - Statistics

Graduate Certificates

- Engineering and Manufacturing Management
- Occupational Safety and Environmental Compliance

Full-time graduate enrollment is normally 9-12 credits per semester. Depending upon the individual degree requirement, full-time graduate students may normally expect to complete degree requirements in two years while part-time students may normally expect to complete degree requirements in four years. A typical three credit-hour course normally requires three hours of classroom instruction plus additional reading and research per week over a semester period.

Financial aid is available.

In addition to the four broad categories of financial aid: grants, scholarships, loans and work-study, full-time graduate students may apply for a graduate assistantship. For complete information on financial assistance, visit <http://cogs.georgiasouthern.edu>.

Apply for admission today.

Visit www.georgiasouthern.edu/admissions to apply for graduate admission or call 912-478-5384. Applicants must follow the admission procedures specified in the University catalog, College of Graduate Studies Web site or listed at the degree program Web site.

Once you have submitted your application and \$50 application fee, you will need to submit the following:

- Official transcripts from each college/university attended
- Official admission test scores such as GRE or MAT as required by your graduate program
- Supplementary application documents as required by your graduate program*
- International applicants must also provide official evaluation of transcripts through a professional evaluation agency and TOEFL scores***

* Many programs require the applicant to present a statement of purpose, career goals and objectives as part of the application package. Examine the department program Web page and/or contact the program director for specific guidelines.

** The TOEFL will be waived for students who have graduated from a U.S. college or university.

\$10,000 Employees who hold master's degrees earn an average of \$10,000 per year more than someone whose highest educational level is a bachelor's degree.*

*U.S. Census Bureau

